

Consultation Site Summary: Torbay

Additional information for this site can be found in the SNCB Advice (page 834), Impact Assessment (Annex I2 Option 2, Page 189) and Regional Project recommendations (FS – 4, page 494).

Table 1. General Information on site and all features recommended by Regional Projects

Regional Project: Finding Sanctuary		Site surface area: 20 km ²	Biogeographic Region: JNCC: Western Channel and Celtic Sea OPSAR Region: Region II: Greater North Sea	
Site Location: Decimal Degrees – Lat: 50.4335 Long: -3.5117 Degrees Minutes Seconds – Lat: 50°26'0"N Long: 3°30'41"W				
Inshore/Offshore: Inshore				
Feature type	Feature name	Area/no. of records	Conservation Objective	
Broad Scale Habitat	Subtidal mud	9 km ²	Recover	
Broad Scale Habitat	Intertidal coarse sediment	0.1 km ²	Maintain	
Broad Scale Habitat	Intertidal mixed sediment	0.1 km ²	Maintain	
Broad Scale Habitat	Intertidal mud	1 km ²	Maintain	
Broad Scale Habitat	Intertidal sand and muddy sand	0.03 km ²	Maintain	
Broad Scale Habitat	Low energy intertidal rock	0.1 km ²	Maintain	

Broad Scale Habitat	Moderate energy intertidal rock	0.1 km ²	Maintain
Habitat FOCI	Intertidal under boulder communities	6 Points Recorded	Maintain
Habitat FOCI	Honeycomb worm (<i>Sabellaria alveolata</i>) reefs	1 Point Recorded	Maintain
Habitat FOCI	Seagrass beds	1 km ² 3 Points Recorded	Recover
Species FOCI	Long snouted seahorse (<i>Hippocampus guttulatus</i>)	1 Point Recorded	Recover ⁵
Species FOCI	Native oyster (<i>Ostrea edulis</i>)	4 Points Recorded	Maintain
Species FOCI	Peacock's tail seaweed (<i>Padina pavonica</i>)	4 Points Recorded	Maintain
Species FOCI	Sea snail ⁶ (<i>Paludina littorina</i>)	1 Point Recorded	Maintain
Mobile Species not listed in ENG	Black throated diver (<i>Gavia arctica</i>)	N/A	Maintain

⁵ Following advice from SNCBs, the Conservation Objective for this feature has changed from the original Regional Project recommendation.

⁶ The sea snail (*Paludina littorina*) has been removed from Schedule 5 of the Wildlife and Countryside Act. This means that it is no longer a Feature of Conservation Importance (FOCI) so has been removed as a feature for designation.

Mobile Species not listed in ENG	Great northern diver (<i>Gavia immer</i>)	N/A	Maintain
Mobile Species not listed in ENG	Great crested grebe (<i>Podiceps cristatus</i>)	N/A	Maintain
Mobile Species not listed in ENG	Black necked grebe (<i>Podiceps nigricollis</i>)	N/A	Maintain
Mobile Species not listed in ENG	Red necked grebe (<i>Podiceps grisegena</i>)	N/A	Maintain
Mobile Species not listed in ENG	Slavonian grebe (<i>Podiceps auritus</i>)	N/A	Maintain
Mobile Species not listed in ENG	Guillemot (<i>Uria aalge</i>)	N/A	Maintain
Mobile Species not listed in ENG	Harbour porpoise (<i>Phocoena phocoena</i>)	N/A	Maintain

Table 2. Sector Impacts and Associated Best Estimate Costs

Sectors Impacted	Best Estimate Costs (£ per year)
Ports, Harbours and Commercial Shipping	1000
Commercial Fishing	2000
Archaeology	Unquantified
Flood and Coastal Erosion Risk Management	Unquantified
Best Estimate Total Cost = £3000	

Table 3. Designation Status of Site and Rationale

Decision	Designation in 2013 Tranche
Rationale for Decision:	
Site Advantages	
<p>The Torbay recommended MCZ is an inshore site measuring 20 km² in size with a wide range of features including seven Broad Scale Habitats, three Habitat FOCI, and three Species FOCI as well as eight Non-ENG features. Of particular interest within this site is the Low energy intertidal rock which contributes the joint second largest area of this feature. Intertidal rock provides a particularly rich source of secondary biomass in the UK. Intertidal boulder communities and Seagrass are BAP habitats. Both Intertidal seagrass and Subtidal seagrass beds are key habitats with high rates of primary production, and are a main source of food for overwintering wildfowl. They also act as nursery grounds for juvenile fish, and provide shelter for a wide range of species. There are currently a significant amount of scientific records for the Seagrass in this site which has very rich faunas associated with it. If this site was not designated there is an increased risk of damage to the seagrass, which plays an important role in stabilising sediment, thus protecting the shallow sublittoral from erosion. Due to the diversity of habitat Torbay has been identified as the second most important area in the South-West for wintering diver and grebe concentrations, an important breeding and nursery area for commercially important fish species, a hotspot for both species of seahorse and well known for visiting Megafauna. Within this site the Long snouted seahorse (<i>Hippocampus guttulatus</i>) is found, which is a WCA, OSPAR and BAP species, and there are too few sites to meet the replication targets for this feature. The Native oyster (<i>Ostrea edulis</i>) which is a BAP and OSPAR feature is located within this site. Peacock's tail seaweed (<i>Padina pavonica</i>) is also found within this site and this feature is currently only just reaching the minimum replication target. This site has also been identified as a site at high risk with the Seagrass beds and Long snouted seahorse (<i>Hippocampus guttulatus</i>) at particularly high risk.</p>	
Socio-Economics	

The Torbay recommended MCZ, has strong support from the conservation and recreation representatives and from Sea Torbay, however there have been concerns from the ports and harbour sector who would prefer an alternative to be found. The main sector impacted by this site is the commercial fishing sector, for which there is a best estimate cost of £2000, associated predominately with dredging and bottom trawl fisheries.

Data Certainty

The Torbay recommended MCZ has acceptable data certainty for four features, of these features Seagrass beds and Long snouted seahorse (*Hippocampus guttulatus*) have been identified as higher risk features within this site. Within this site nine features have unacceptable data certainty these include: Low energy intertidal rock, Intertidal coarse sediment, Intertidal sand and muddy sand, Intertidal mud, Intertidal mixed sediment, Honeycomb worm (*Sabellaria alveolata*) reefs, Native oyster (*Ostrea edulis*) and Peacock’s tail seaweed (*Padina pavonica*)

Conclusion

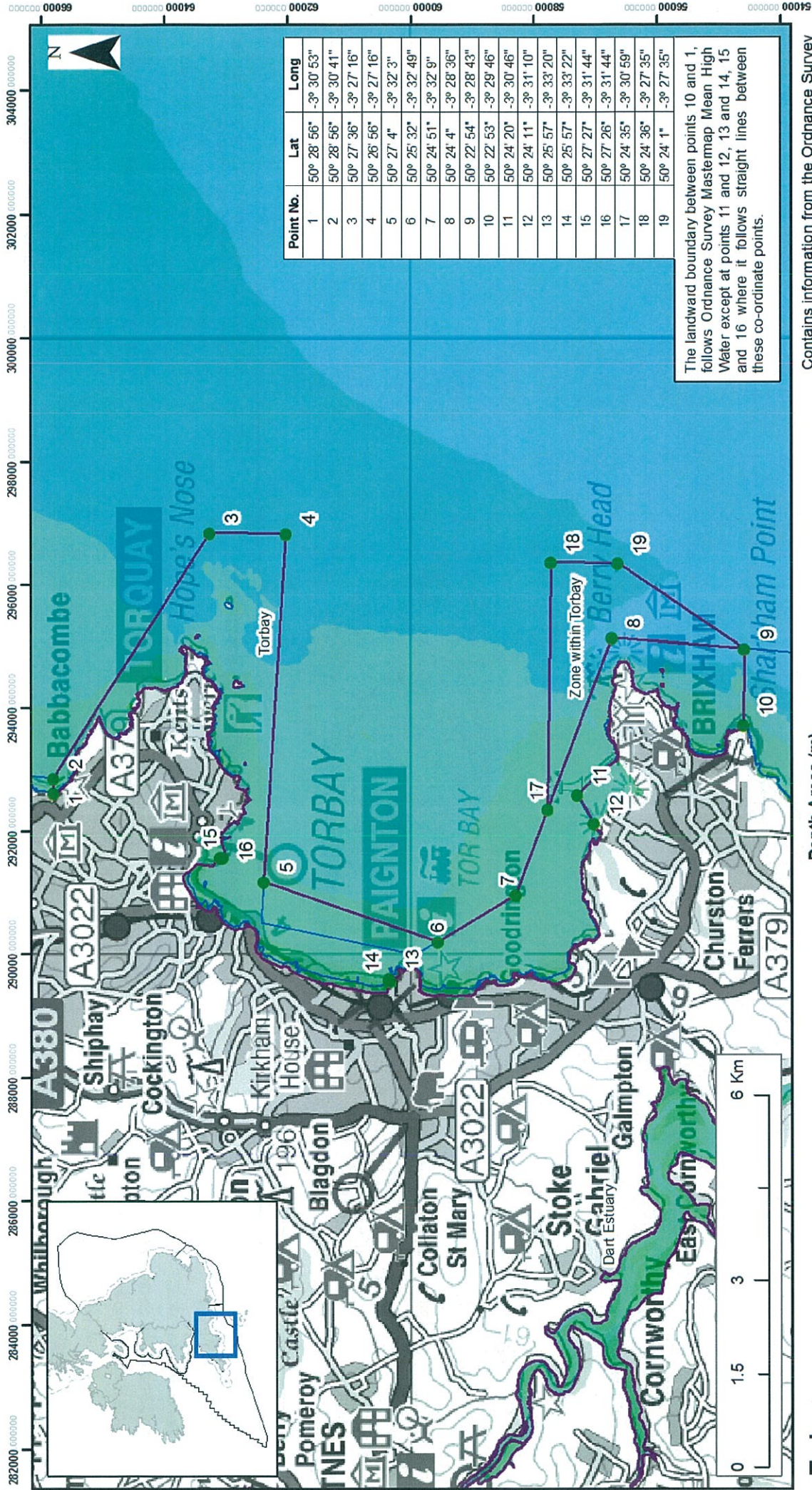
Therefore, as the advantages for this site justify the socio-economic costs, and the SNCBs have highlighted this site as at higher risk, this site has been proposed for designation in 2013 for the features as demonstrated in the table below. Further work will be required to improve the data certainty for features not proposed for designation in 2013 prior to inclusion in future designations.

For this site the regional project also proposed eight Non-ENG features and these will also require further consideration

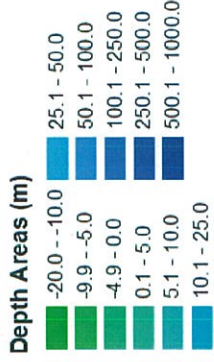
Table 4. Features Proposed for Designation in 2013

	Features requiring improvement in data certainty prior to designation
Subtidal mud	Moderate energy intertidal rock

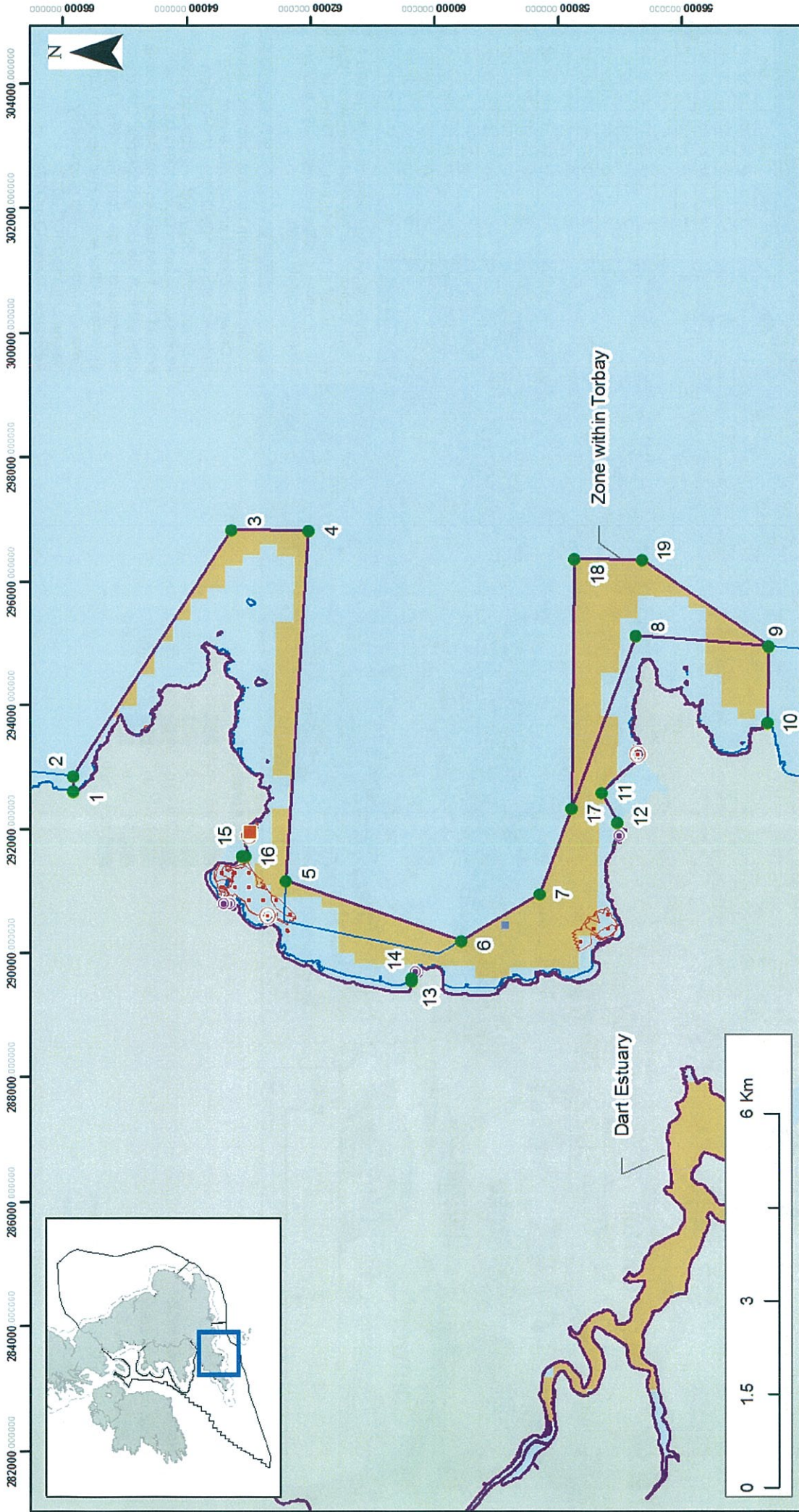
Intertidal underboulder communities	Low energy intertidal rock
Seagrass beds	Intertidal coarse sediment
Long snouted seahorse (<i>Hippocampus guttulatus</i>)	Intertidal sand and muddy sand
	Intertidal mud
	Intertidal mixed sediments
	Honeycomb worm (<i>Sabellaria alveolata</i>) reefs
	Native oyster (<i>Ostrea edulis</i>)
	Peacock's tail seaweed (<i>Padina pavonica</i>)



Contains information from the Ordnance Survey
 © Crown Copyright and database right 2012.
 Ordnance Survey 100022021. UKHO Data
 © British Crown Copyright. All rights reserved.
 Permission Number Defra012012.001. This
 product has been derived in part from material
 obtained from the UK Hydrographic Office with
 the permission of the Controller of Her Majesty's
 Stationery Office and UK Hydrographic Office
 (www.ukho.gov.uk). Map produced by
 Natural England/JNCC 2012.
 Reference: Theme ID 1477643.
 Map Projection: British National Grid



- Torbay**
- Recommended MCZ
 - rMCZ boundary co-ordinates
 - SAC with Marine Components
 - England 12nM Territorial Seas Limit
 - MCZ Regional Projects boundaries



Contains information from the Ordnance Survey
 © Crown Copyright and database right 2012.
 Ordnance Survey 100022021. UKHO Data
 © British Crown Copyright. All rights reserved.
 Permission Number Defra012012.001. This
 product has been derived in part from material
 obtained from the UK Hydrographic Office with
 the permission of the Controller of Her Majesty's
 Stationery Office and UK Hydrographic Office
 (www.ukho.gov.uk). Map produced by
 Natural England/JNCC 2012.
 Reference: Theme ID [147643].
 Map Projection: British National Grid

Features proposed for 2013 designation

- Hippocampus guttulatus
- Intertidal underboulder communities
- Seagrass beds
- Seagrass beds
- Subtidal mud (A5.3)
- Subtidal mud (A5.3)

Torbay

- Recommended MCZ
- Recommended MCZ
- rMCZ boundary co-ordinates
- MCZ Regional Projects boundaries
- England 12nM Territorial Seas Limit
- SAC with Marine Components
- Land